

The image features a dark, almost black, background with a complex, organic marbled pattern. The pattern consists of thin, light-colored veins and swirls that create a sense of depth and texture. Centered horizontally and vertically is the text "DREAMS BECOME REALITY" in a clean, white, sans-serif font. The text is all-caps and has a slightly spaced-out appearance, making it stand out against the dark, textured background.

DREAMS BECOME REALITY



INFINITE VIEWS OF THE MEDITERRANEAN SEA



# DREAMS BECOME REALITY

The Project is a luxury development of **11 exclusive villas**, set in a secure gated golf and country club estate. These fabulous homes are situated in a prime location, front line to the **La Resina Golf Course**.

Each villa has been meticulously designed blending **contemporary architecture** with sleek, modern interiors and smart, open layouts. You are guaranteed to enjoy **wonderful views of the Mediterranean Sea** thanks to the elevated position and vast glazed facades.



YOUR WINDOW ON THE WORLD



*Only the finest quality of materials and leading brands are incorporated throughout the property, ensuring a standard of finish that is sure to impress.*

# LIVING THE LIFE OF LUXURY

The development has been designed to **maximise indoor-outdoor living**. Natural light floods through every corner of the property and each living space has been carefully crafted to seamlessly flow from the stylish interior to the **immense exterior terraces**.

Set on 2 floors, these spacious villas have double height ceilings in the living room, enhancing the sensation of space and light. The clever use of glass ensures that views across the garden and out towards the horizon are always free from obstruction.











# HOME HARMONY

Relaxation starts from the moment you arrive home. The open plan design provides a unique **harmonious space** where you are sure to feel calm and free.

The generously sized rooms ensure that the whole family have their dedicated space to breathe and enjoy privacy, while the social areas make coming together an effortless joy.

*Get ready to enjoy stunning views and breathtaking sunsets from your terrace, bedroom or pool.*





# A PRIVILEGED LIVING EXPERIENCE

We understand the important of **living with complete peace of mind**. From the moment you pass through the arch of La Resina, you will feel assured that your home and family is safe. Each property is secured with alarm and camara protection systems.

Join the friendly social country club of **La Resina Golf**. There's something for all the family to enjoy. From a round of golf to dinner and sunset drinks on the splendid terrace overlooking the golf course.

*Your local cosy club house is a few minutes away where you can enjoy a private 9 hole golf experience with a lovely restaurant and watch some stunning sunsets from the splendid terrace. Just a few minutes away are a great selection of sports, amenities and beach restaurants to truly indulge in Mediterranean living.*



# A GOLF LOVERS PARADISE

If you love golf, you are in the right place! Enjoy practising your favourite sport in a beautiful setting. **La Resina Golf** is considered one of the best 9-holes on the Costa del Sol. It has magnificent tropical gardens and lush green landscapes.

As well as **La Resina Golf**, there are an abundance of other courses to explore nearby. The famous Villa Padierna Golf is just a few minutes away, not to mention El Paraiso, Los Flamingos and Atalaya which are all in close proximity.

LA RESINA GOLF COURSE





# EXCLUSIVE SURROUNDINGS

Situated within the **Golden Triangle of the Costa del Sol**, La Resina is only a few minutes from the stunning old town of Estepona and the upmarket resort of Marbella and Puerto Banús. Here you are guaranteed to enjoy life to the full. Indulge in celebrated Michelin Star restaurants, world famous beach clubs with all the shopping and leisure options you can think of.

La Resina is well **connected to 2 international airports** on the coast. Gibraltar Airport can be reached within 30 minutes and Malaga Airport just a 45 minute drive.

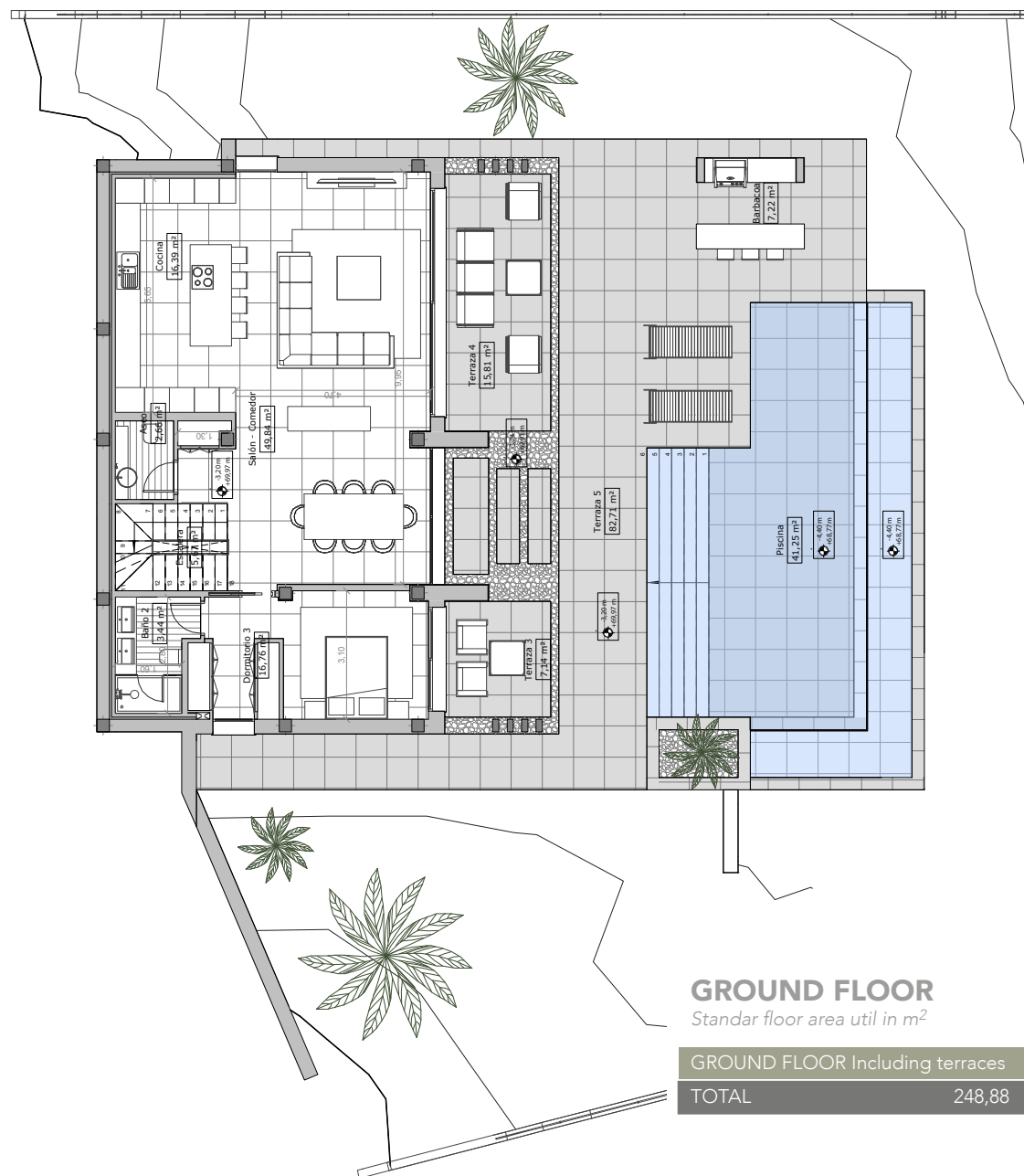
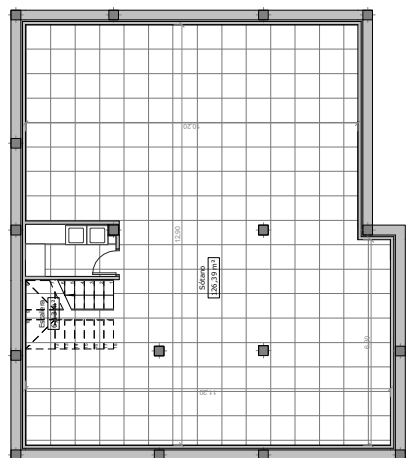


# FLOOR PLANS

## BASEMENT

Standar floor area util in m<sup>2</sup>

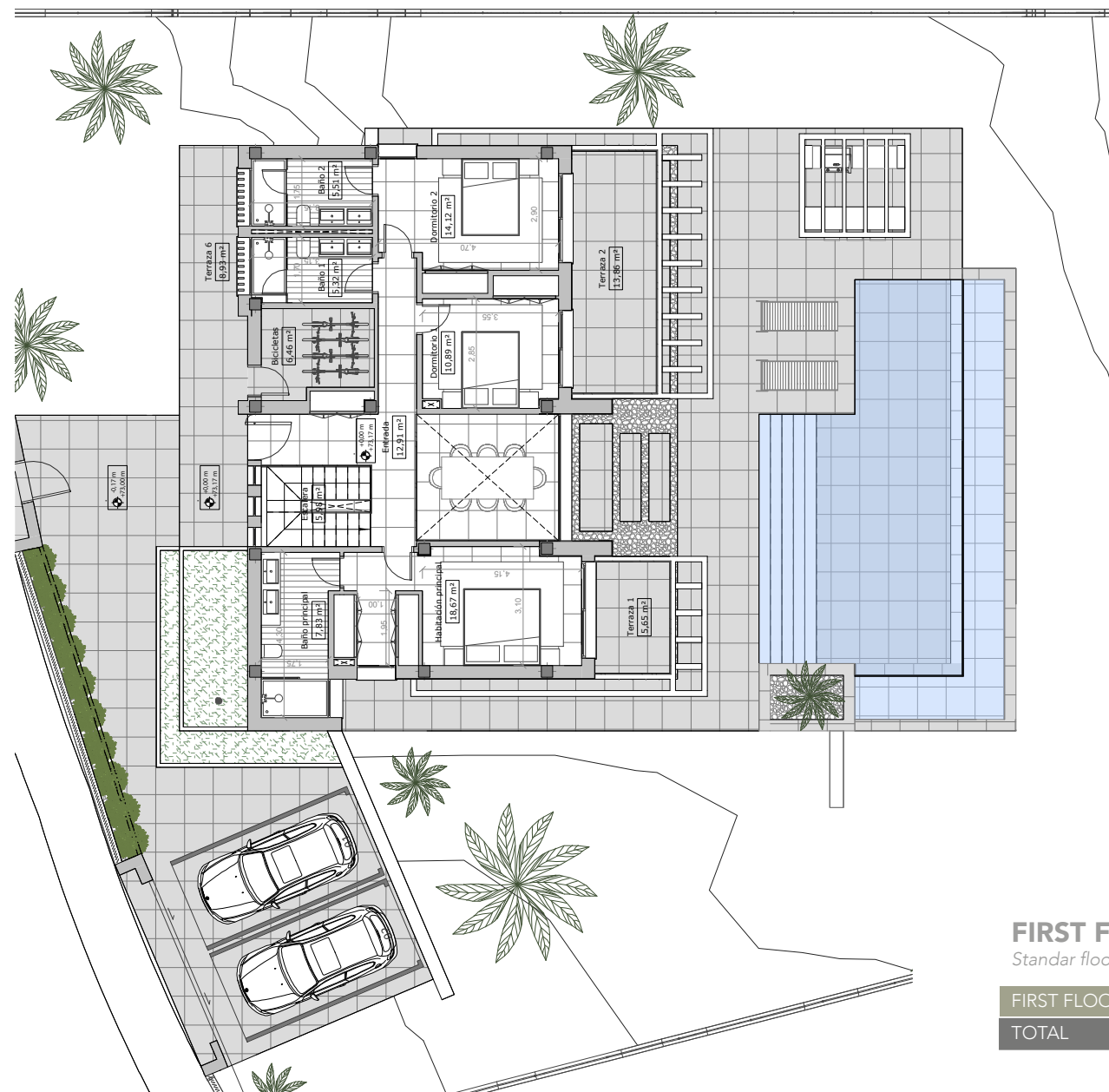
BASEMENT	
TOTAL	136,88



## GROUND FLOOR

Standar floor area util in m<sup>2</sup>

GROUND FLOOR Including terraces	
TOTAL	248,88



## FIRST FLOOR

Standar floor area util in m<sup>2</sup>

FIRST FLOOR Including terraces	
TOTAL	116,13



This dossier is exclusively informative, not binding. This information is based on the Project currently available, which is of an exemplifying nature, and may undergo eventual necessary modifications derived from variations of the definitive Project, produced by technical, legal reasons, licenses and other administrative requirements that may affect the Development, and the Promoter reserves the right to make the relevant modifications in order to comply with legal, administrative and technical provisions or at the request of the competent authority or the facultative management of the Development. The images, infographics, plans, sketches, designs and dimensions contained in this dossier are merely indicative, being subject to legal, commercial or technical modifications. Likewise, the elements of furniture, accessories, equipment, decoration and other elements that may be observed are illustrative in character and may be replaced by others in the future.